

Paper Reference(s) 4PH1/1P 4SD0/1P
Pearson Edexcel International GCSE (9–1)

Physics
UNIT: 4PH1
Science (Double Award) 4SD0
PAPER: 1P

Wednesday 22 May 2024 – Morning

Time: 2 hours

Diagram Booklet

THIS DIAGRAM BOOKLET MUST BE RETURNED WITH THE QUESTION PAPER AT THE END OF THE EXAMINATION.

In the boxes below, write your name, centre number and candidate number.

Surname					
Other names					
Centre Number					
Candidate Number					

INSTRUCTIONS

There may be spare copies of some diagrams in case you need them.

CONTENTS

Page

4	Question 1(a) – Blank
5	Question 3
6	Question 4(a)
7	Question 5(a)
8	Question 5(b)
9	Question 5(b)(i)
10	Question 6
11	Question 6(d)
12	Question 7
13	Question 8
14	Question 9(a)
15	Question 9(b)
16	Question 10
17	Question 10(c)
18	Question 10(c)(i)
19	Question 10(c)(ii)
20	Question 11
21	Question 11(c)
22	Question 12

Spare Copies

23	Question 1(a) – Blank
24	Question 4(a)

(continued on the next page)

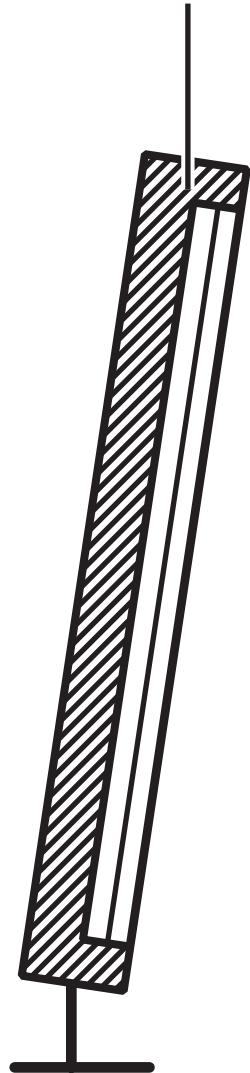
CONTENTS continued.

25	Question 5(a)
26	Question 6
27	Question 6(d)
28	Question 8
29	Question 10(c)(ii)
30	Question 12

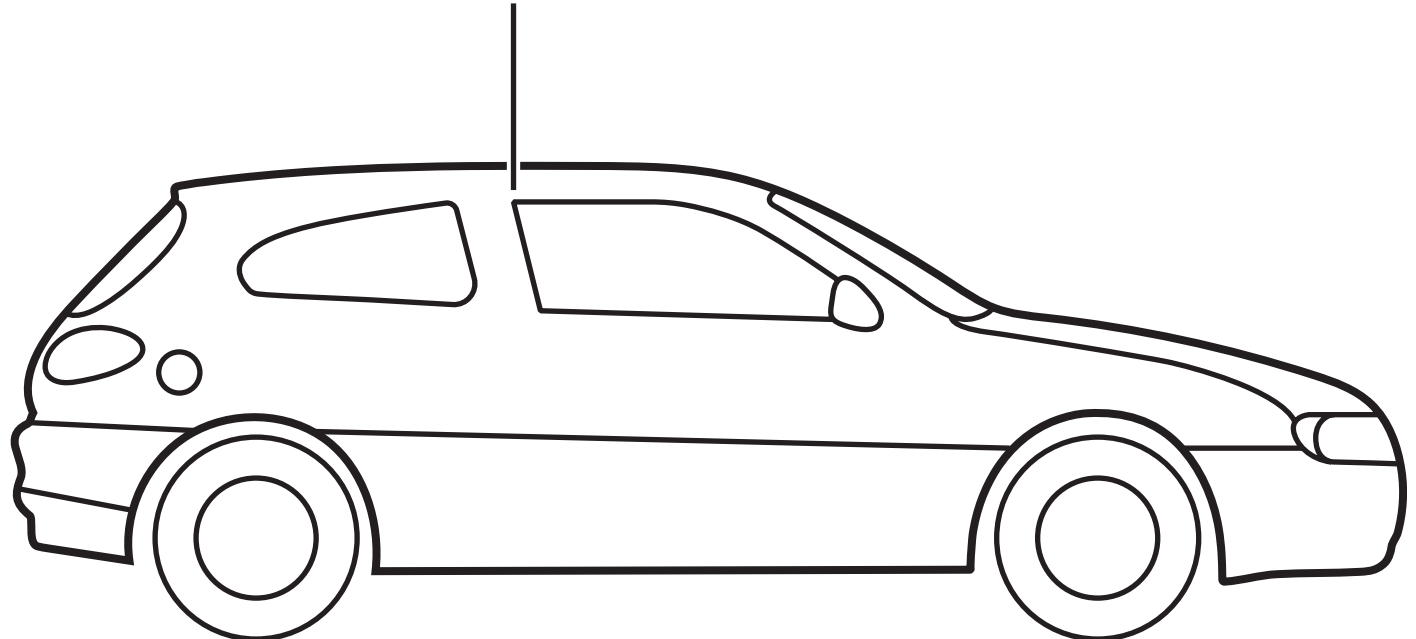
Question 1(a) – Blank

Question 3

infrared heating lamps



car



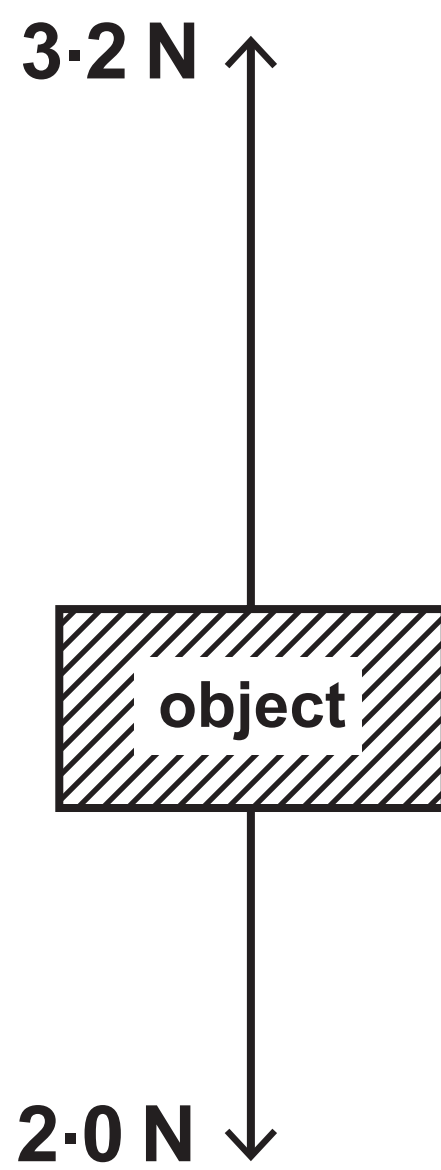
Question 4(a)

Energy store	Increases	Decreases	Stays the same
chemical			
gravitational potential			
nuclear			
thermal			

Question 5(a)

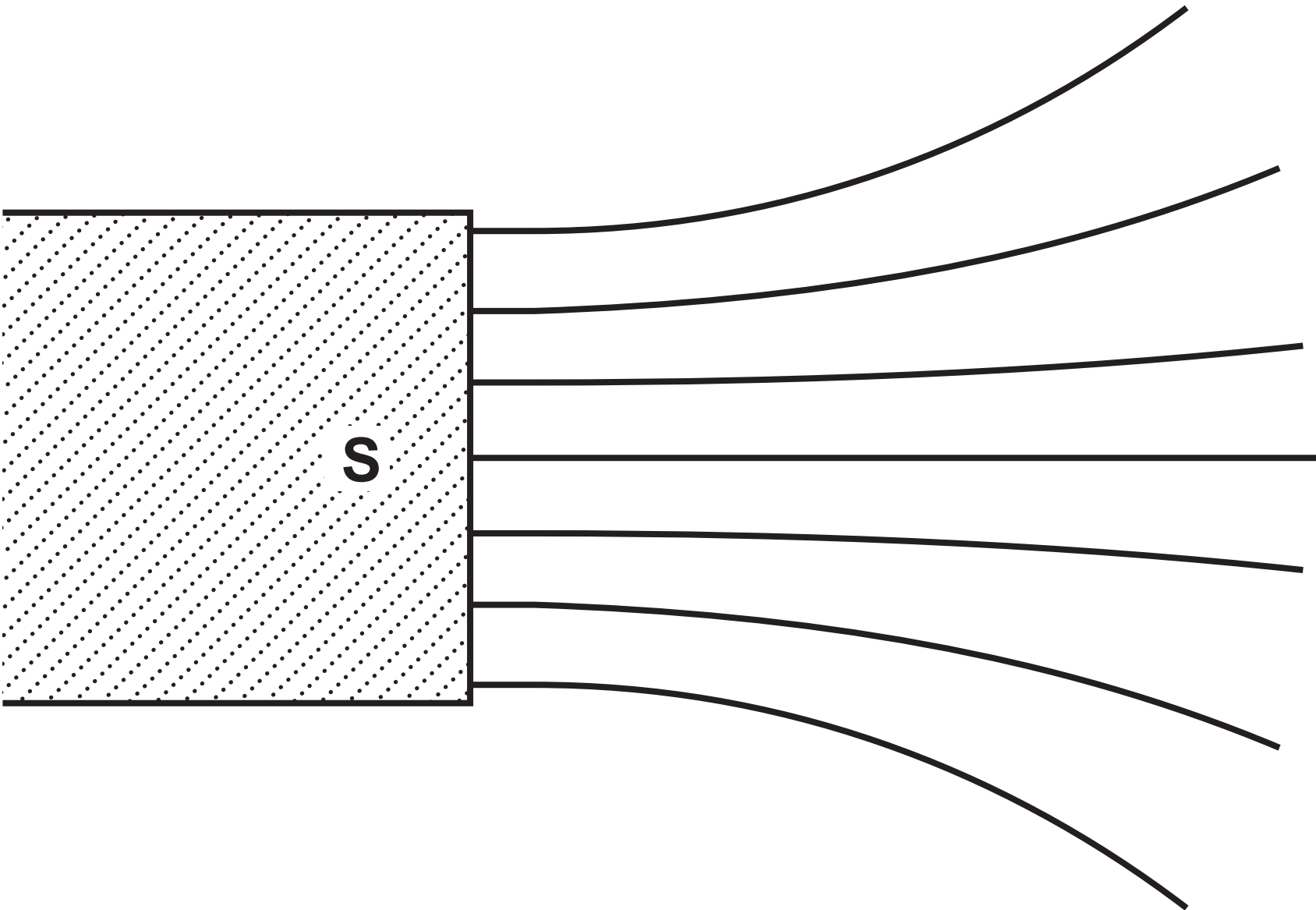


Question 5(b)**DIAGRAM 1****support****spring**

Question 5(b)(i)**DIAGRAM 2**

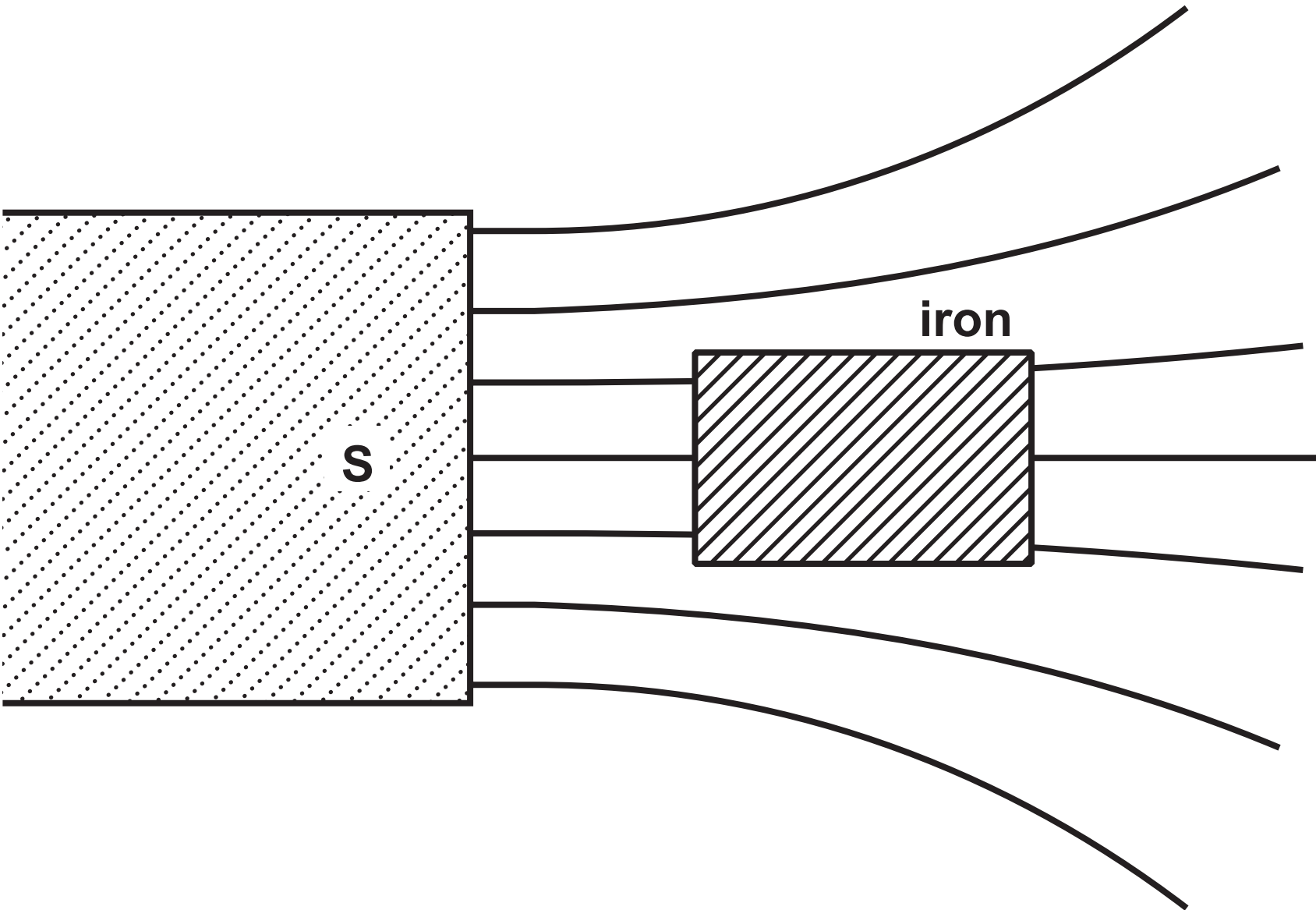
Question 6

DIAGRAM 1

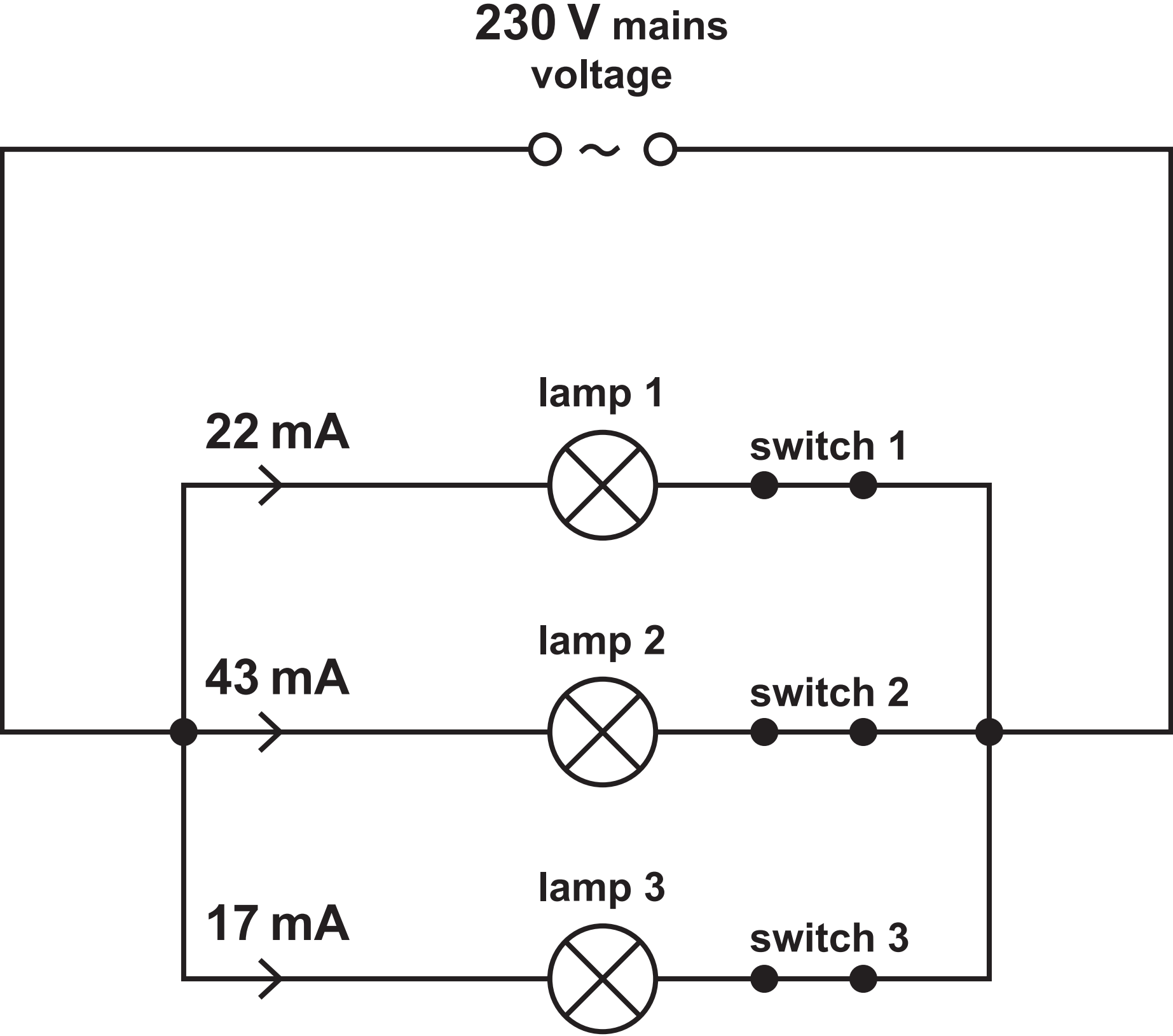


Question 6(d)

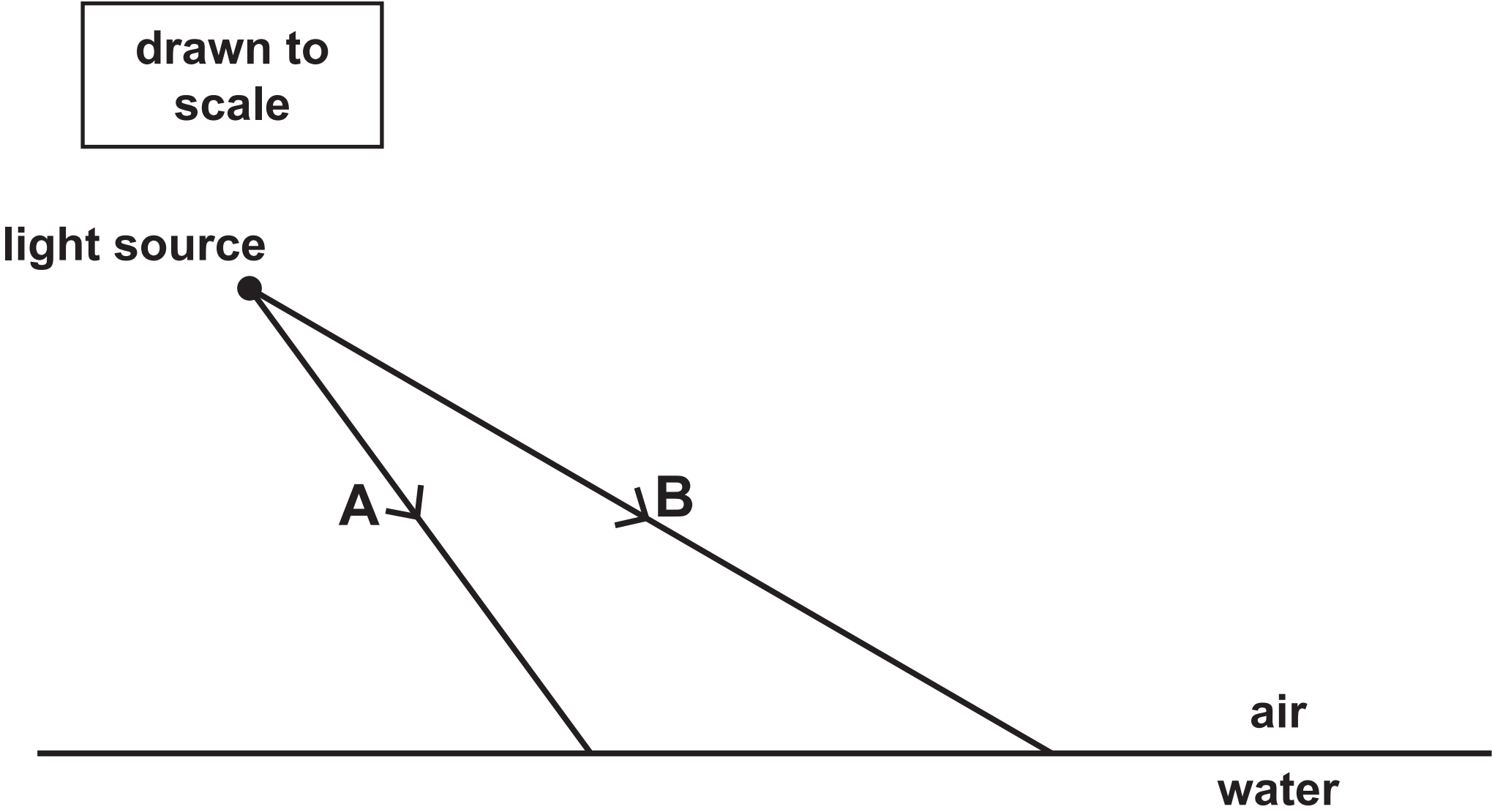
DIAGRAM 2



Question 7

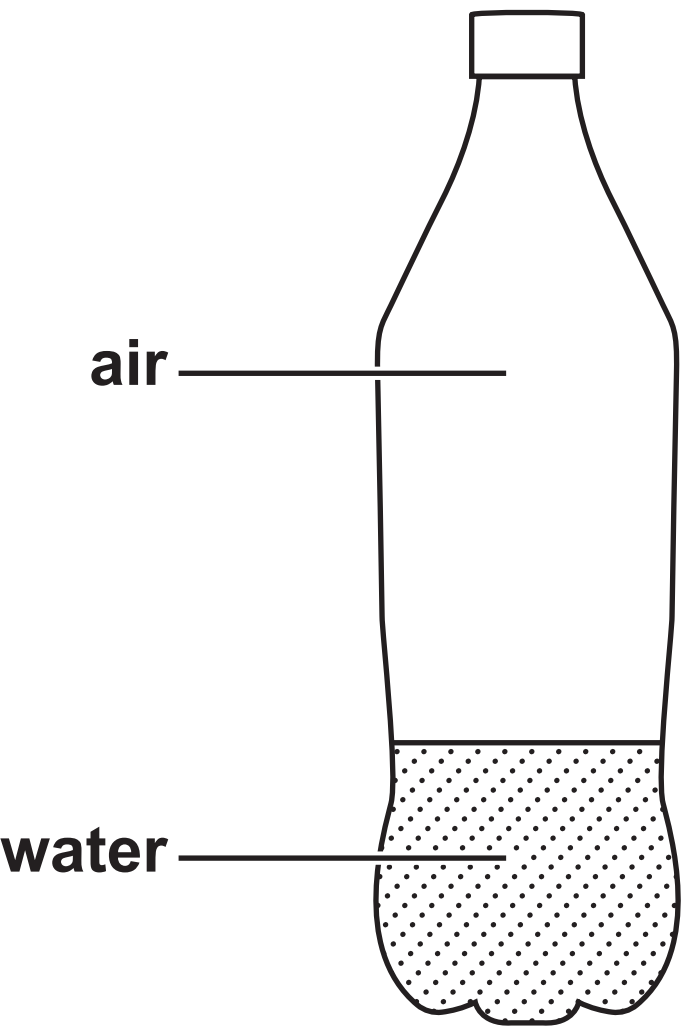


Question 8



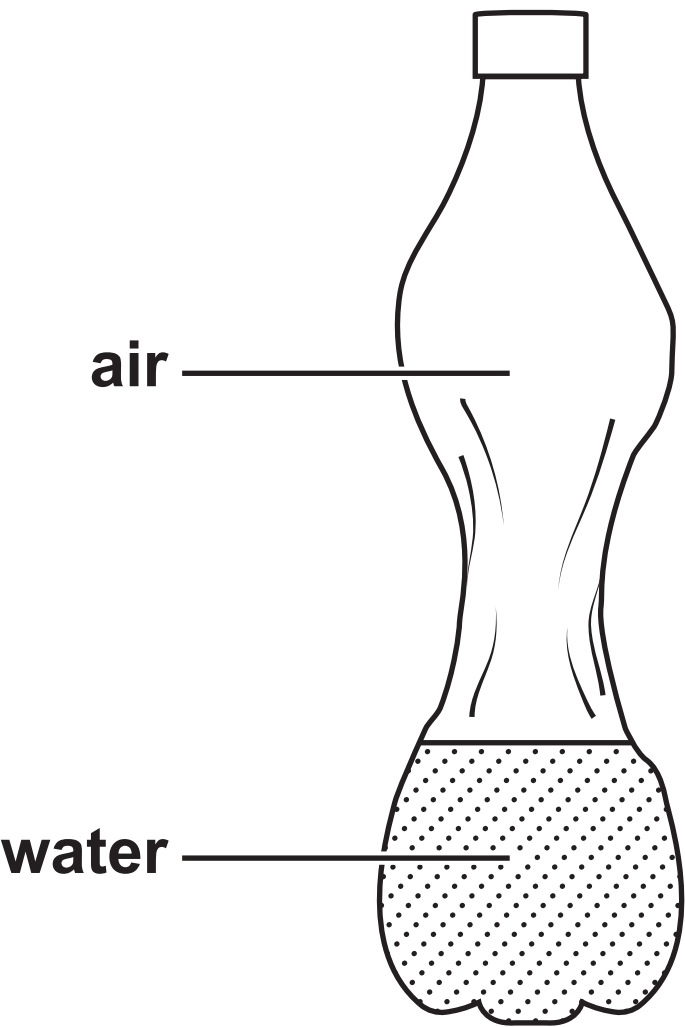
Question 9(a)

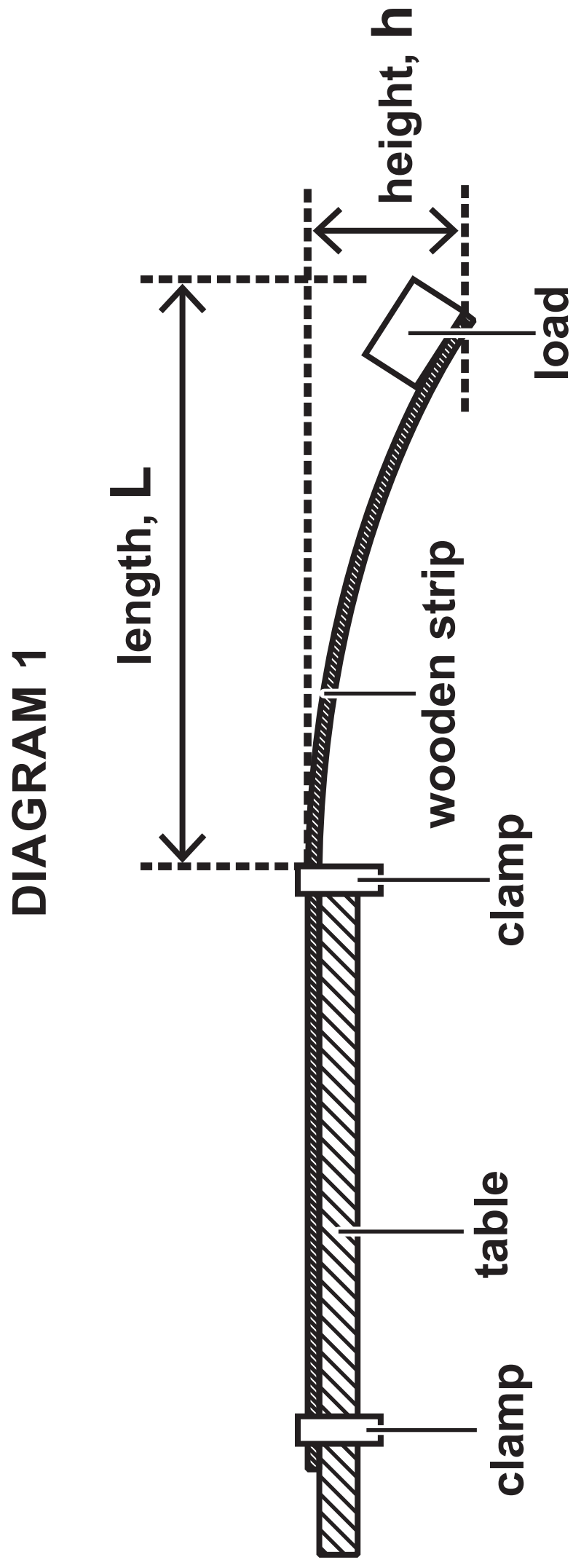
DIAGRAM 1



Question 9(b)

DIAGRAM 2



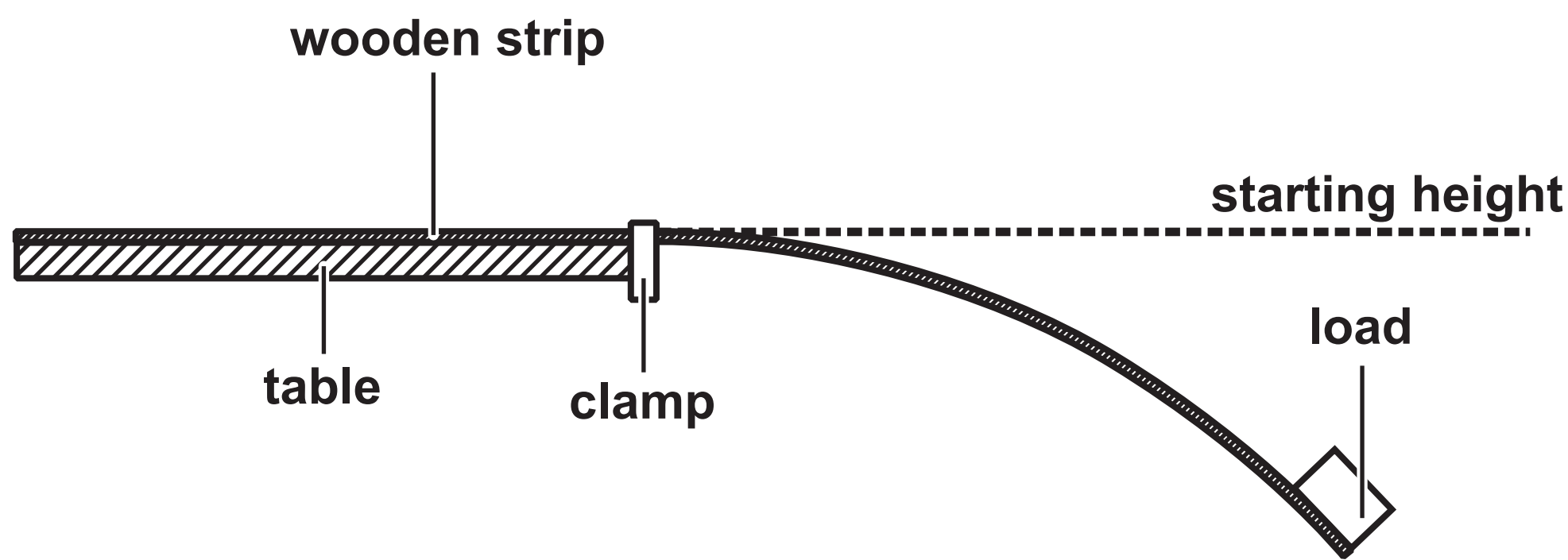


Question 10(c)

Length (L) in cm	Height (h) in cm
20	2
40	8
60	18
80	
100	53
120	71

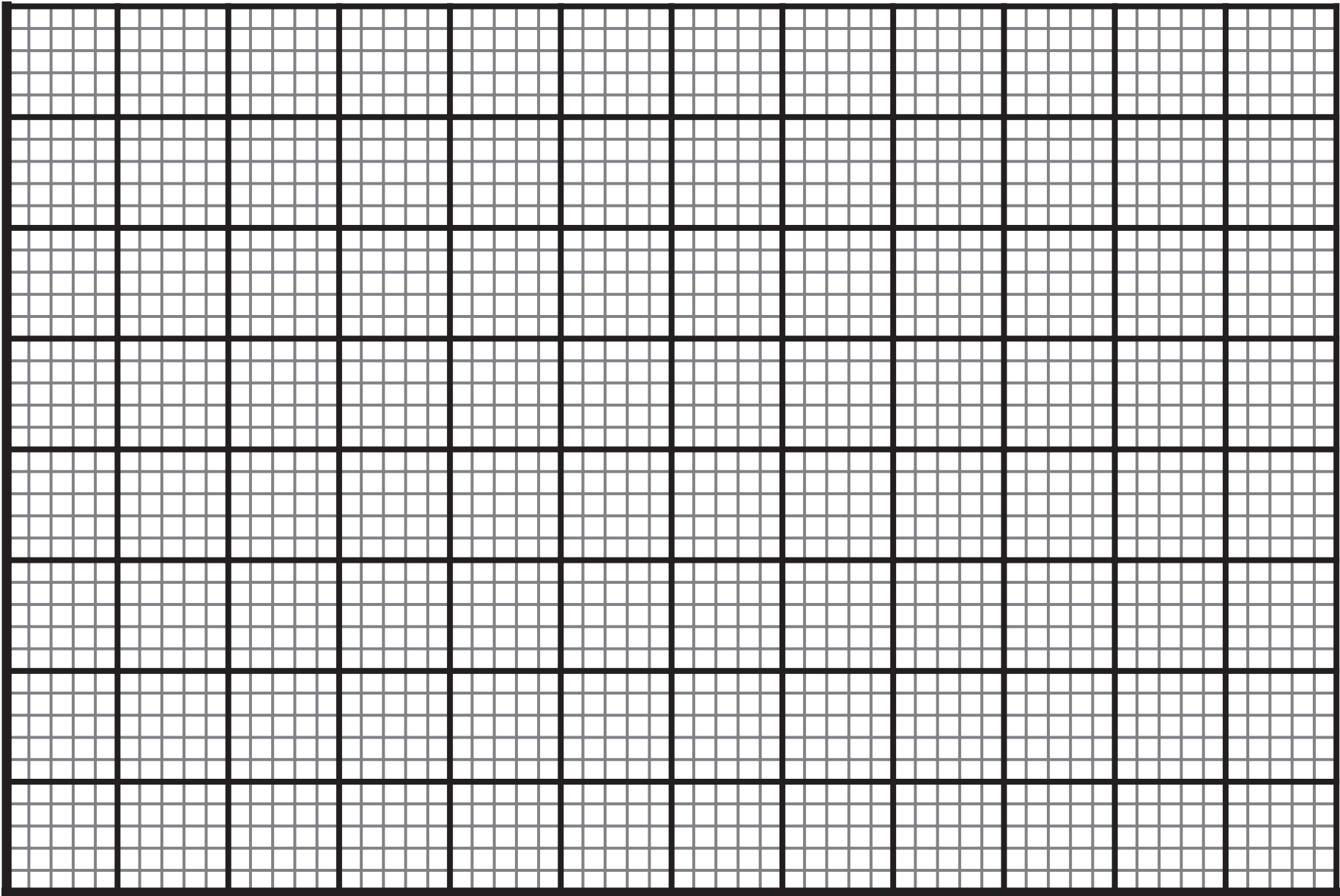
Question 10(c)(i)

DIAGRAM 2



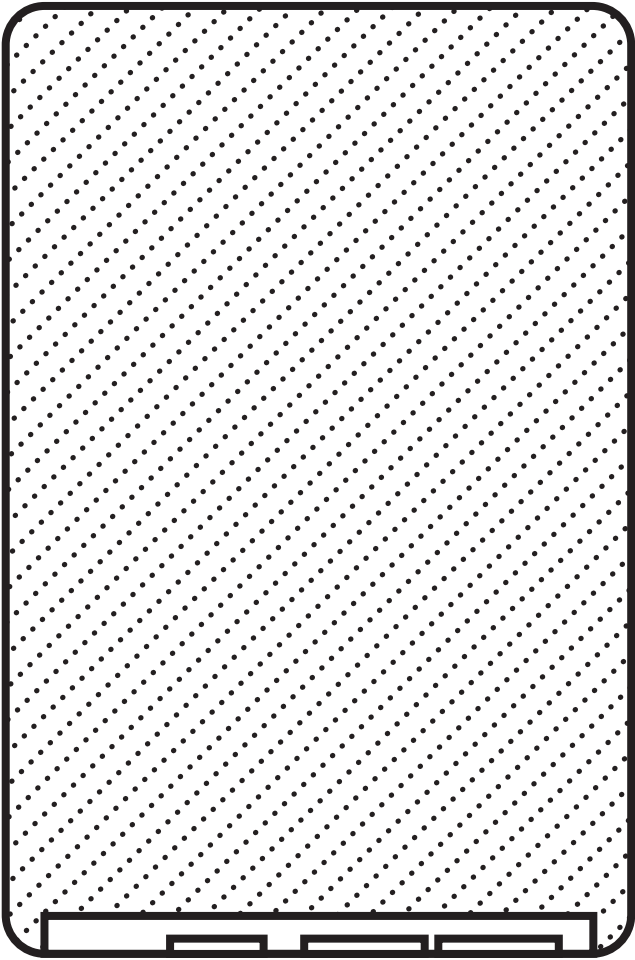
Question 10(c)(ii)

Height (h) in cm



Length (L) in cm

Question 11

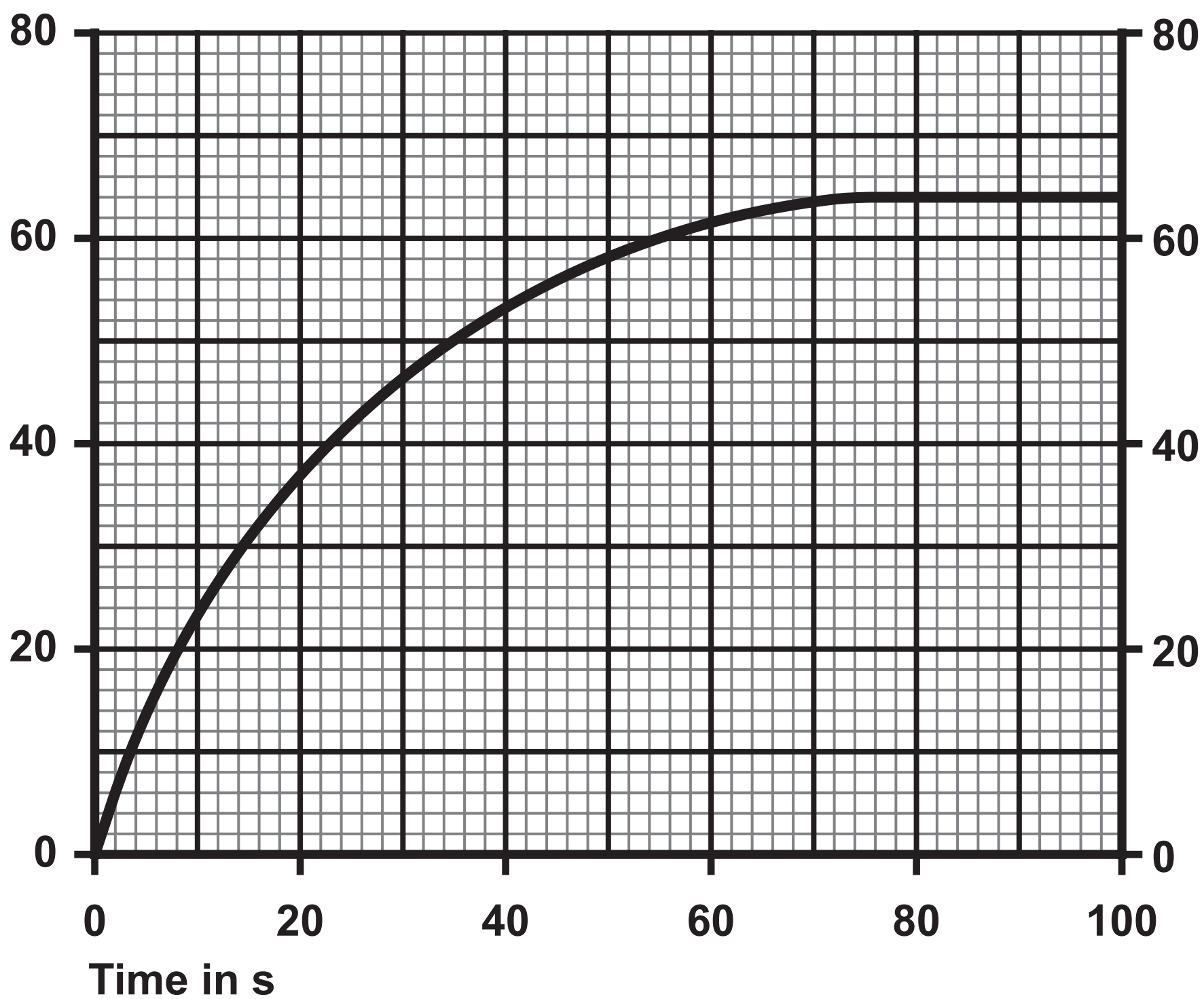


Question 11(c)

Electronic device	Charge stored in Ah	Frequency of recharging
A	2·4	once every day
B	4·2	once during the week
C	6·8	once during the week

Question 12

Velocity in m / s



Question 1(a) – Blank

Question 4(a)

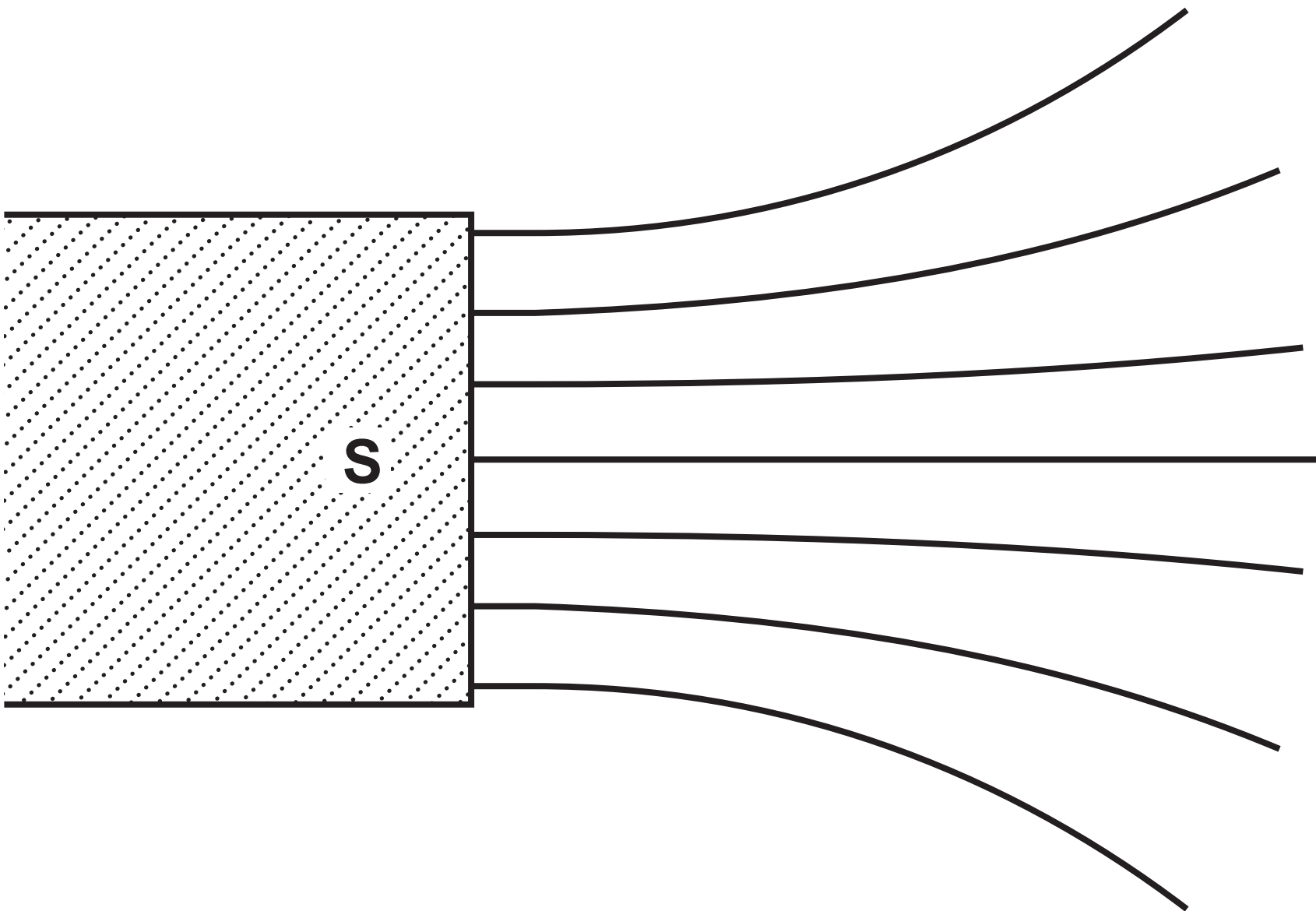
Energy store	Increases	Decreases	Stays the same
chemical			
gravitational potential			
nuclear			
thermal			

Question 5(a)



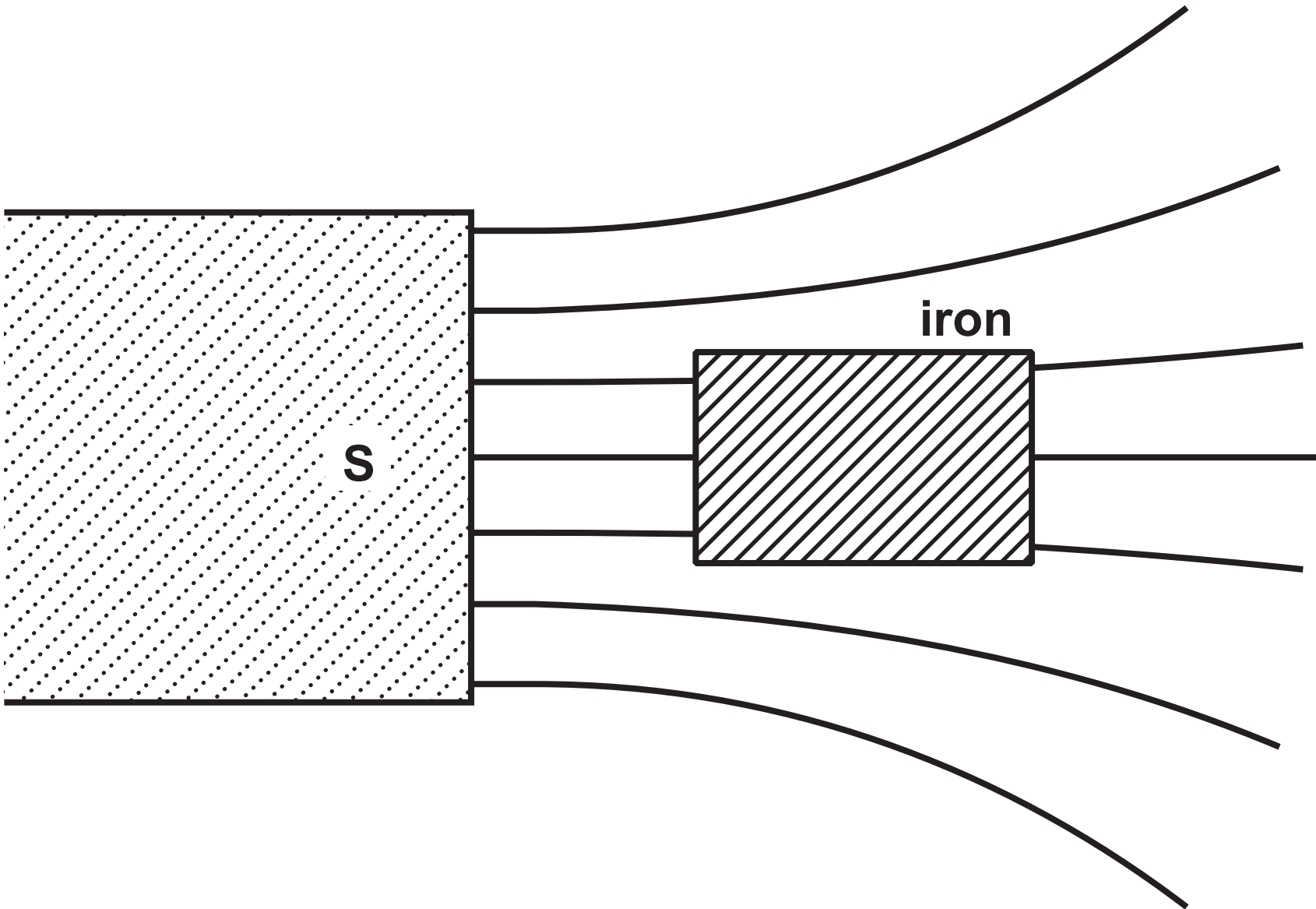
Question 6

DIAGRAM 1



Question 6(d)

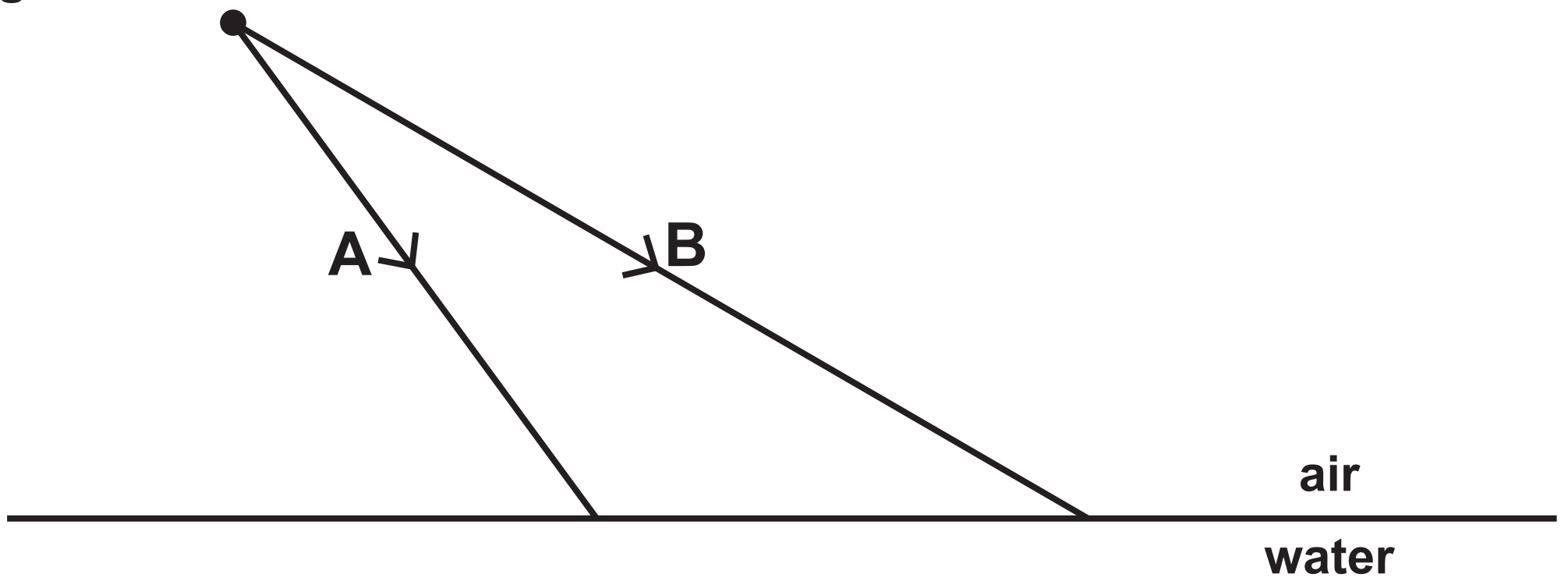
DIAGRAM 2



Question 8

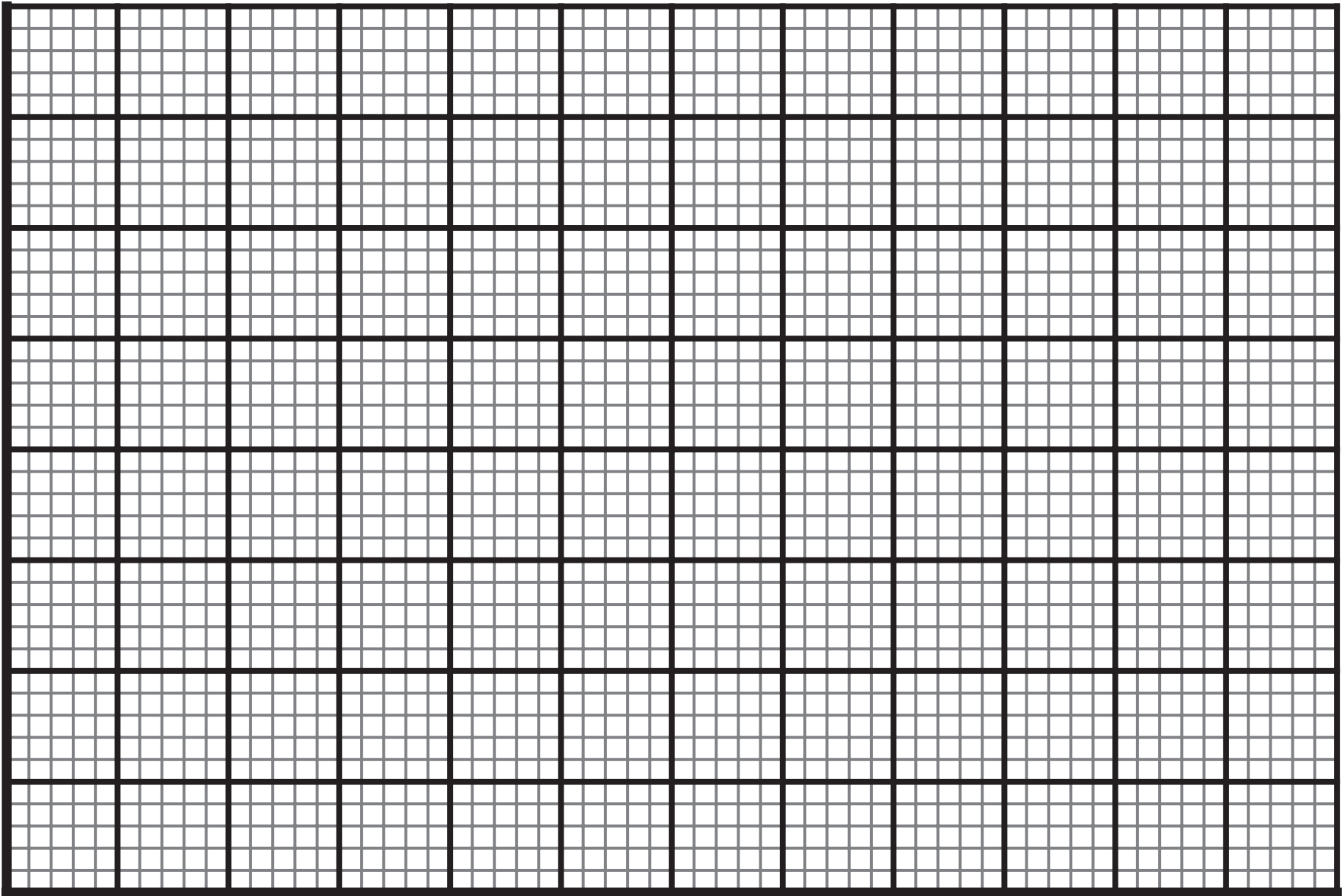
drawn to
scale

light source



Question 10(c)(ii)

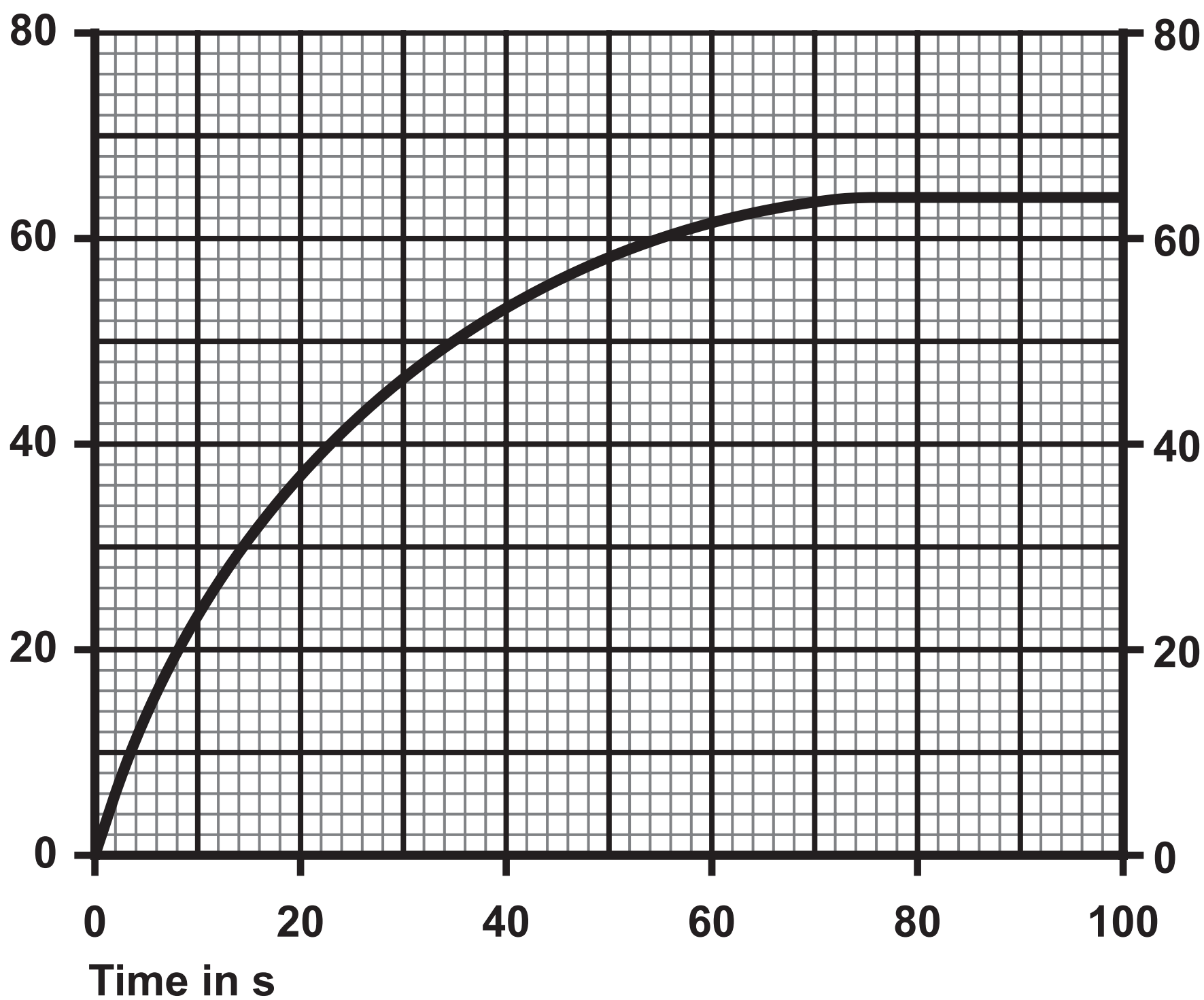
Height (h) in cm



Length (L) in cm

Question 12

Velocity in m / s



Source information

Question 3

Source: adapted from © Dmitry Kalinovsky/Shutterstock